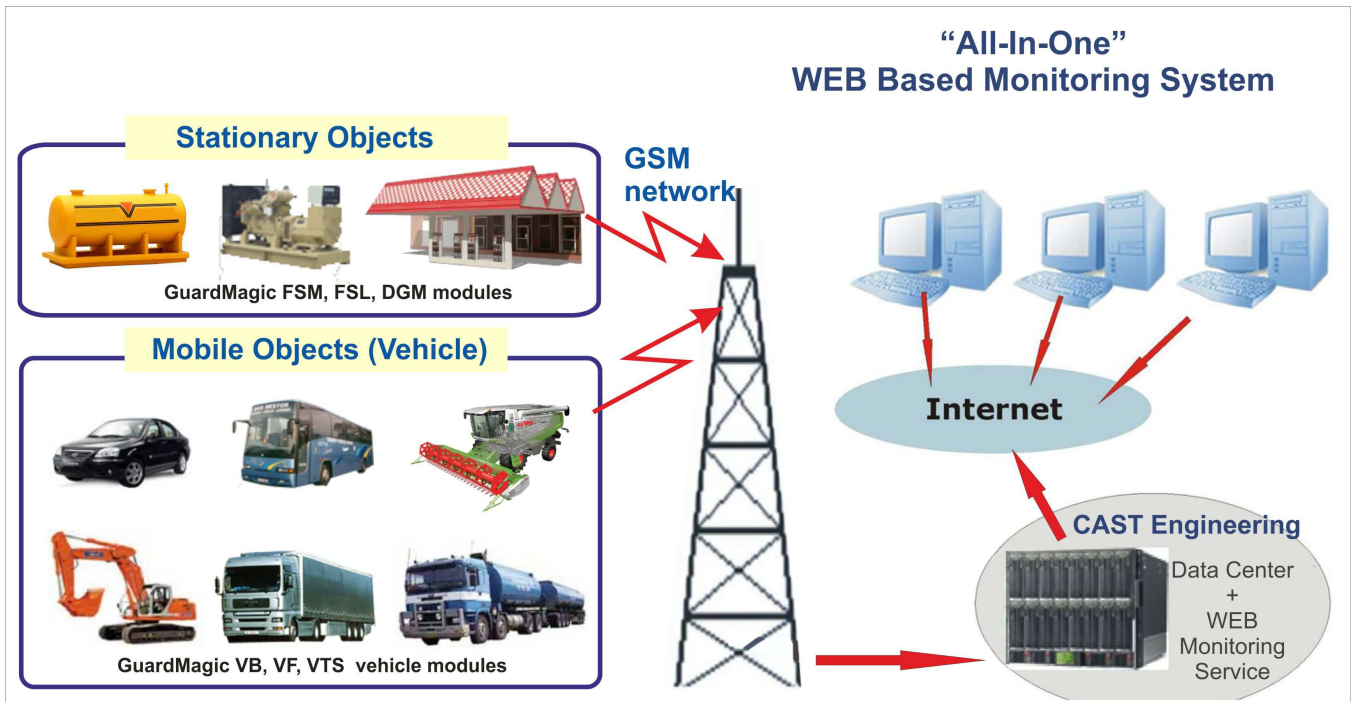


## 1. ABOUT "ALL-IN-ONE" WEB BASED MONITORING SERVICE

"ALL-IN-ONE" WEB monitoring service intended to remote monitoring different type pf objects:

- **Mobile objects and vehicle** (cars, trucks, buses, road fuel tankers, refrigerator trucks, mining and construction machinery, diesel electric locomotives, towboats and other type of vehicles);
- **Stationary objects** (fuel storage tanks, generators, refrigerators, fueling stations, electric transformers etc.).



WEB based "All-In-One" monitoring system give you 24-hour secure access to all your mobile (vehicle, special machinery etc.) and stationary objects (fuel storage tanks, diesel generators etc): tracking, reporting and management information, from any PC in any part of the world.

GPS vehicle monitoring system vehicle or special machinery,

WEB based system does NOT require any software installation or any your support of system operation. The only requisite is a computer with internet access.

WEB based system allows for real time tracking of each vehicle's movements, status of vehicle, fuel consumption and activity records.

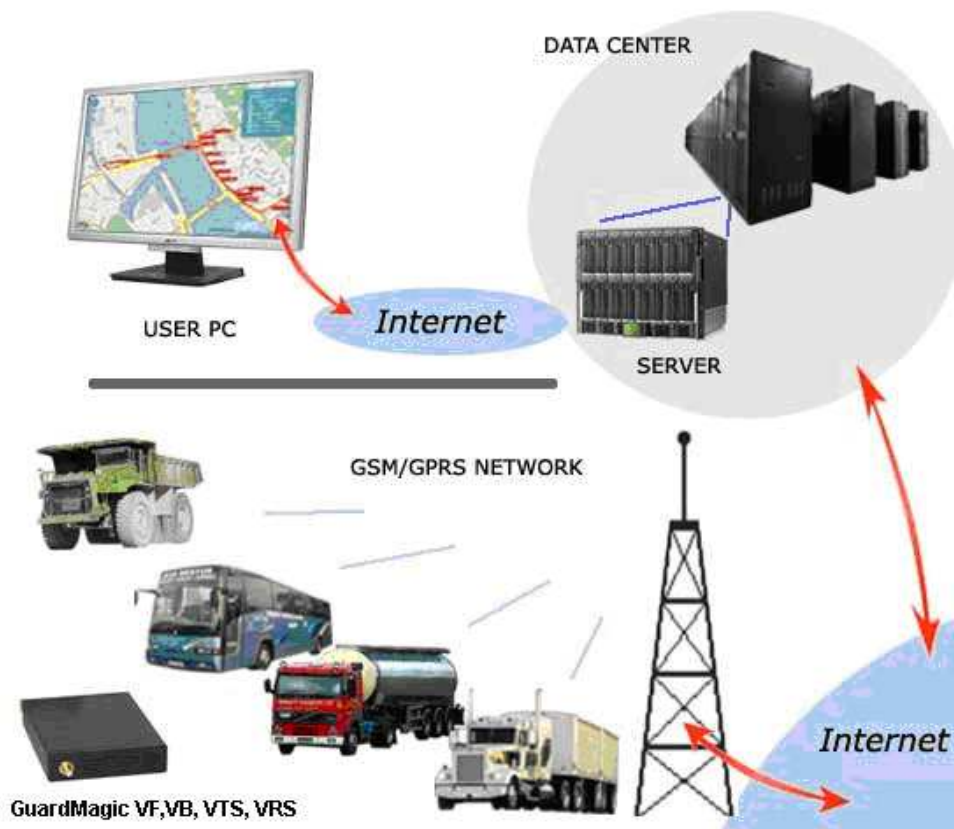
The system is easy to use and will assist you in incrementing productivity and efficiency and reducing costs.

WEB based GPS vehicle monitoring system is ideal for companies that need non-stop monitoring and management of their vehicle fleet, and efficient planning.

***In Full Automatic Mode Monitoring:***

- 365 Days per Year;
- 24 Hours per Day;
- All Countries in World;
- Storage All Data;
- Not Needed Any Your Support.

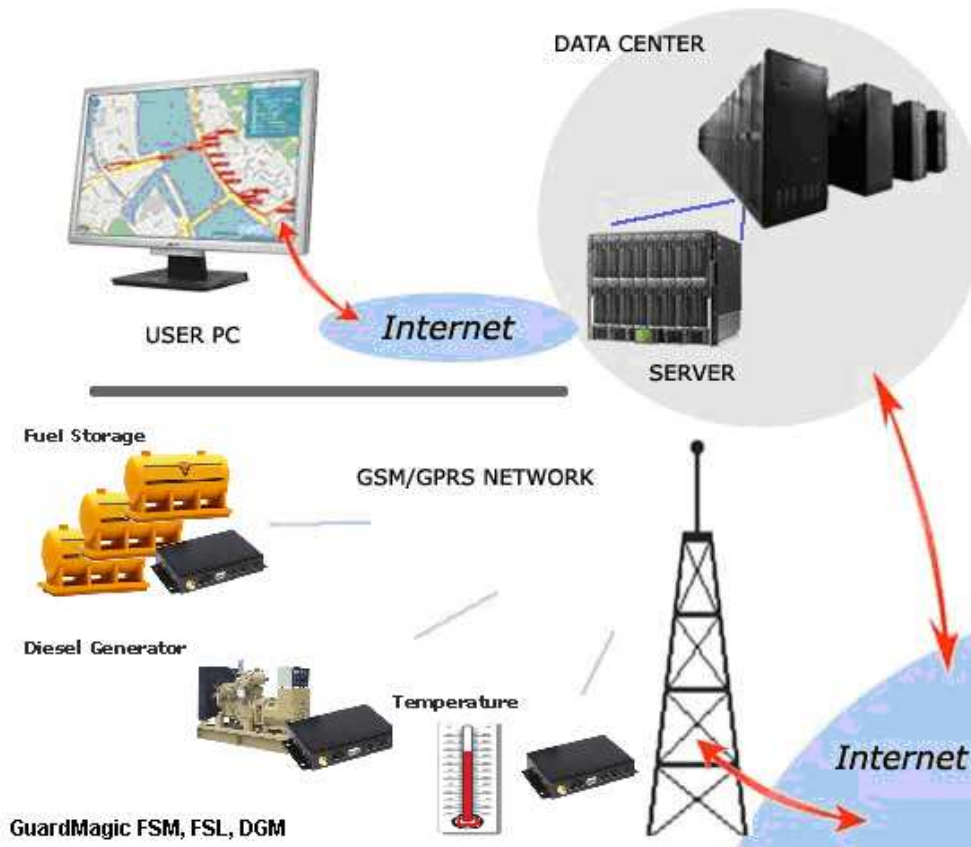
## 1.1 Mobile Objects (Vehicle) Monitoring



GPS-GPRS Vehicle Monitoring gives you detailed information about your fleet and allows to:

- Monitoring vehicle, trailer, semitrailers, driver;
- Monitoring fuel, temperature, external sensors etc;
- Check the location of your vehicle and/or special machinery in real-time;
- Check the whole track of the transport movement and the optimality of route;
- Check parameters of movement and real run of transport;
- Control the trip parameters of your vehicles;
- Control the trip distance;
- Display the location of your vehicles and/or special machinery;
- Check the visited points;
- Control the movement parameters of your vehicle;
- Control the vehicle and special machinery utilization (working hours);
- Control the activity of vehicles and machinery;
- Monitoring fuel level in vehicle regular fuel tanks and fuel tanker cargo fuel tanks;
- Control fuel consumption;
- Monitor fueling, draining, fuel loading, fuel unloading;
- Monitoring status of additional extra sensors;
- Personalize the active driver;
- Control the working days of drivers or operators, their activities and each working steps;
- Prevent non authorized use of vehicle and special machinery;
- Generate reports, graphs about vehicle and driver activity;
- Other key operation parameters;

## 1.2 Stationary Objects Monitoring



Stationary objects monitoring gives you detailed information about your fuel storage tanks, diesel generators, stationary refrigerators, fueling station and allows to:

- Prevents fraud of fuel;
- Prevents unauthorized use of fuel;
- Gives detailed information about fuel in fuel tanks;
- Gives detailed information about fuel tank fueling and draining;
- Gives detailed information about fuel consumption;
- Collects and stores information about fuel in tank for detailed analyzing;
- Gives detailed fuel usage history.

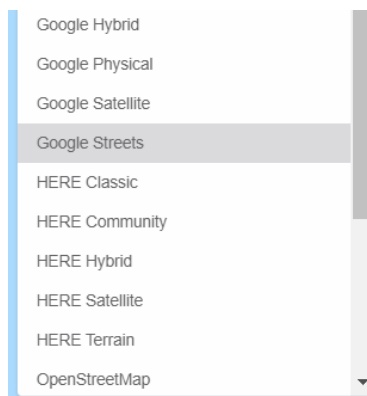
## 1.3 Advantages

- Monitoring two type of objects: Mobile and Stationary;
- Multi languages support;
- Multi fuel tanks monitoring of each objects;
- Monitoring all type of road fuel tankers;
- Monitoring all type of refrigerator tanks;
- Multi temperature sensors monitoring;
- Monitoring additional extra sensors;
- Monitoring driver activity;
- Monitoring trailer or semitrailer status;
- Ability to monitor fuel quality in cargo fuel compartments (fuel tanks);
- Ability to monitor dissolved water in fuel (water activity) in cargo fuel tanks;
- Ability to monitor status of cargo fuel hatches and fuel pumps;

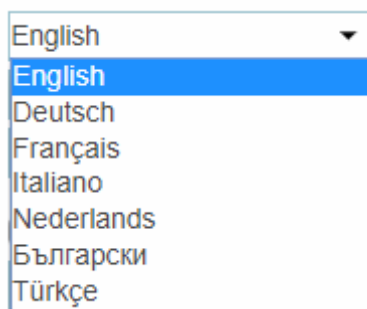
## 2. ALL WORLD COVER



## 3. MULTIMAP AND SATTELITE IMAGES



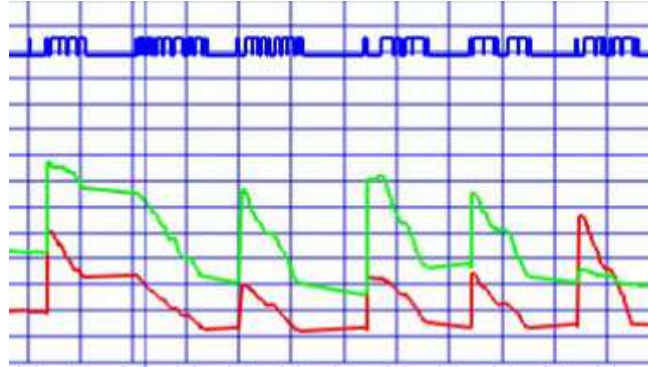
## 4. MULTILANGUAGE SUPPORT



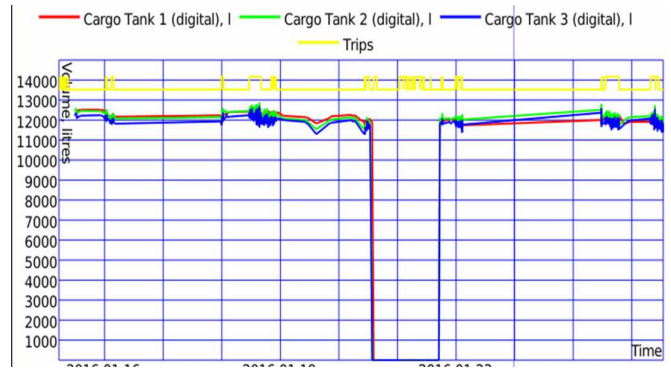
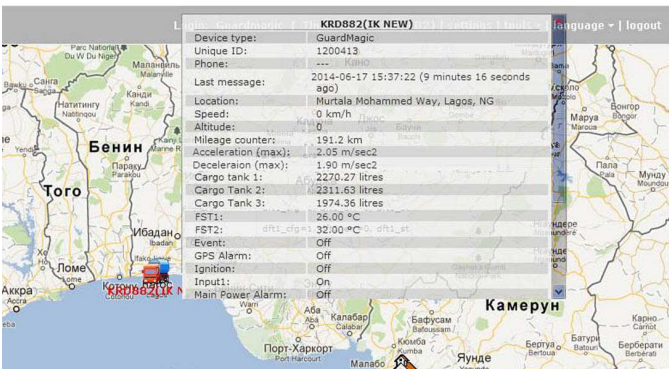
Available also: Portugues, Espanol, Arabic, Serbian, Greek, Chines, Mongolian, Russian, Hungarian

## 5. TRACKING AND FUEL MONITORING

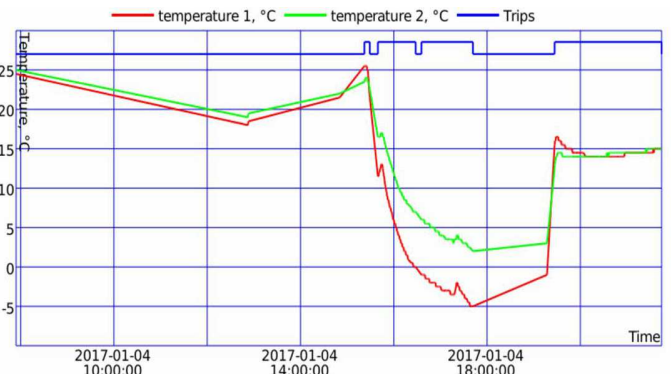
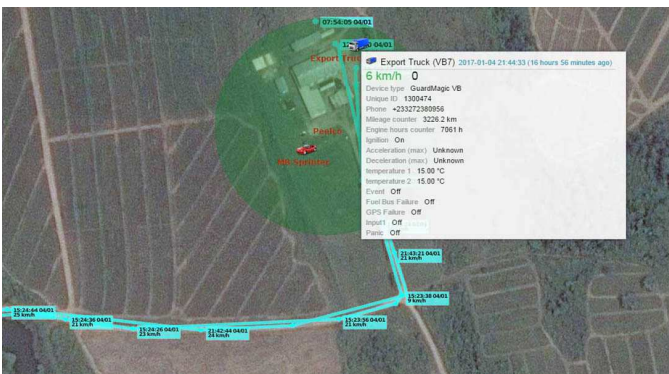
### 5.1 Standard Vehicle (Truck, Car, Agricultural etc.) Monitoring



### 5.2 Road fuel Tanker Monitoring (Petroleum Products Monitoring)



### 5.3 Refrigerator Truck Monitoring (Temperature Monitoring)



## 6. GENERAL INFORMATION

Advanced CAST Fleet-management Software - complex satellite monitoring system (also known as a GPS monitoring), which consists of several independent services for different requests of users. This Fleet-management Software is based on advanced technology and a complex software system (cluster) to monitor the fifth-generation. All data is collect and combine on one server, and then divides in other intermediate servers. This solution allows the operator to bring the monitor service to the user, in expedite access to and relevance of data.

### Key features:

- Integrated transactional storage system from the well-known producer in the world - Oracle;
- The possibility of constructing a distributed architecture designed for the millions of monitoring unit and users;
- The close integration with WebGIS-3 server - search on map, linking messages to roads in the construction route, the definition of the address by coordinates, a given image of the map and much more things;
- The possibility of remote control devices by GPRS;
- Support for notification of various events such as entry and exit geozones, excess or decrease speed, change control sensors and digital inputs. Notifications could be sent by E-Mail, SMS, displayed online or stored in the history of the events of the device for inclusion in a report on notifications;
- Support jobs running under a specific schedule, such as the delivery of reports via email or execute a command over the unit;
- Access from mobile Phone.

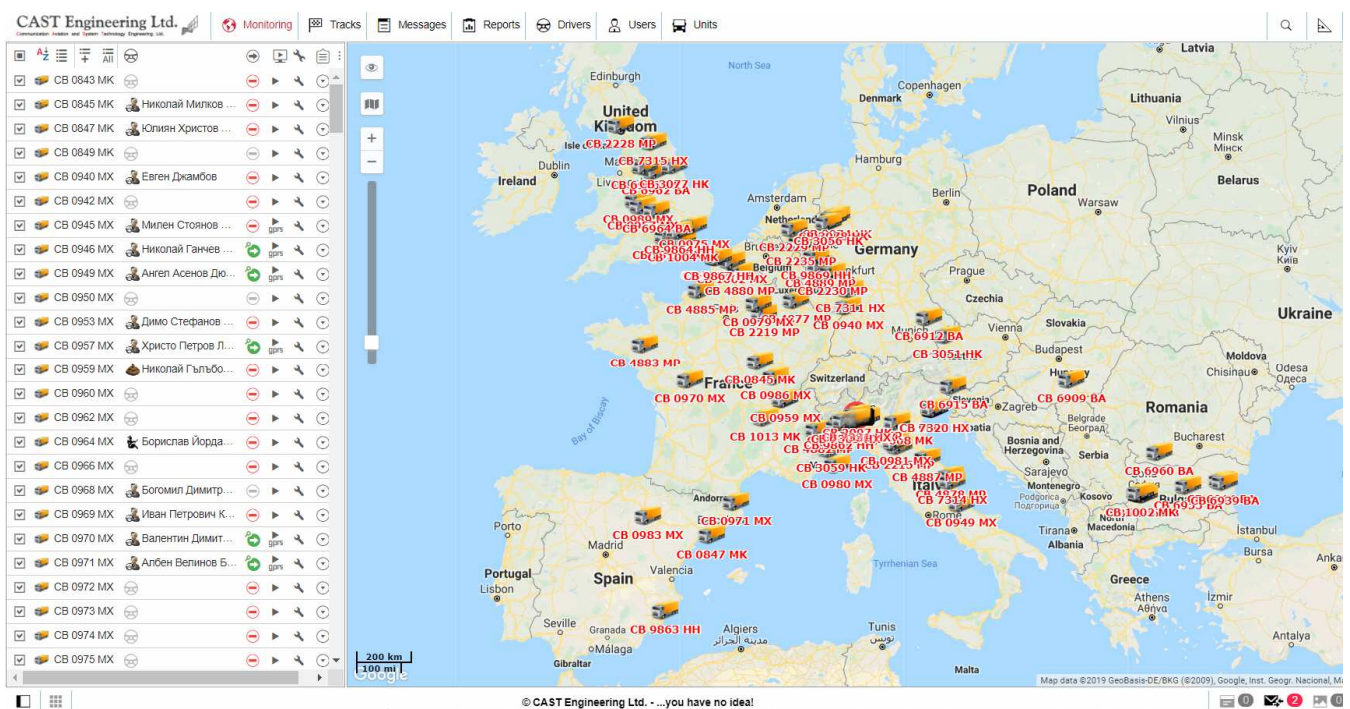
The CAST WEB GPS Fleet-management Software works Web based in a browser installed on your computer. In connection with Internet, there is no need to install additional programs and modules. Enough that on the computer installed one of the following browsers: Mozilla Firefox 2.0 and above, Opera 9.5 or above, Microsoft Internet Explorer 7.0 and above.

## 7. ON-LINE MONITORING

Any object on the map represented by the icon, if you move your mouse on it, you can see detailed information about the state of the object. The operator can set any icon for the unit, for more information and improve the distinction of units.

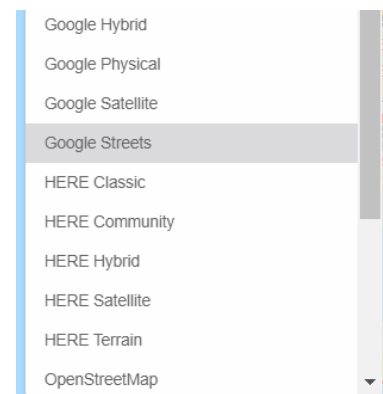
In real time you can monitor any object: its location on the map, the state of sensors and alarms. The relevance of the information will depend on the frequency of parcel data to the server device. With 1-2 second delay a data is displayed in the browser window.

Near the unit may display its name. If there are a lot of names you can switch off show names. The same can be do with the direction of motion of the unit, which is a green arrow. You can also switch the display of unit motion during the last 5 messages, for now the unit will reach the blue "tail" showing the track of its movement on the map.



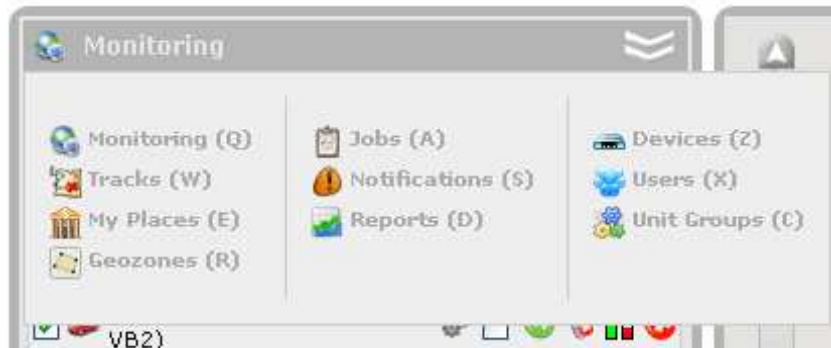
## 8. MAPS

The CAST Fleet-management Software supports the following types of maps: WebGIS-3, Yandex Maps, OpenStreetMap, Google Maps, Microsoft Live Maps. You may search by city, streets and homes on the maps WebGIS-3. If a unit is moving over houses, you can attach the unit's track traffic to roads.



## 9. HOT KEYS ON WEB INTERFACE

You can use hot keys for ease of navigation on the site and to quickly move between tabs. All buttons for quickly switching are placed under the list of bookmarks, in the first column of bookmarks - this is the first line of letters, etc.



## 10. TRACK OBJECTS

Any movement of the unit you can see on the map, for this - unit should be set flag to show. You can switch on "Show devices traces" to see last movements, if this enough. Then for the unit will go "tail" consisting of the last 5 messages. If this is not enough, you can open "Tracks" tab and see detailed information on the map as the unit moved during a specified period of time. Also you can use "Lock messages to roads". If the unit is moving aside from the road (no more than 50 m), the server will moves the track to the road, that more evident than riding aside on the road and over the houses.





## 11. MESSAGES FROM MODULE

If the information about the unit, its speed and direction are not enough, you can see messages from the unit with all parameters came in a message. You can receive messages for a specified period and display as the original data or the distribution these parameters on the sensor. In one parameter may include several sensors

The screenshot shows the GuardMagic software interface. On the left, there are filters for Unit (CB 1008 MK), Interval (Specified interval), From (19 December 2019 00:00), To (20 December 2019 23:59), Message type (Data messages), and Show parameters as (Raw data). Below these is a 'Result' section with statistics:

- Total messages: 1824
- Total time: 1 days 07:45:21
- Distance: 206.51 km
- Average speed: 6.50 km/h
- Maximum speed: 90.00 km/h

Below the statistics is a table with the following data:

	Time	Speed, km/h	Coordinates	Altitude, m	Location
1	19 Dec 2019 00:00:05	0	44.5211516, 11.212655 (17)	48	44.5211516, 11.212655
2	19 Dec 2019 00:00:05	0	44.5211516, 11.212655 (17)	48	44.5211516, 11.212655
3	19 Dec 2019 00:15:05	0	44.5211516, 11.212655 (14)	48	44.5211516, 11.212655
4	19 Dec 2019 00:30:05	0	44.5211516, 11.212655 (14)	48	44.5211516, 11.212655
5	19 Dec 2019 00:45:05	0	44.5211516, 11.212655 (15)	32.4	44.5211516, 11.212655
6	19 Dec 2019 01:00:05	0	44.5211516, 11.212655 (16)	33.3	44.5211516, 11.212655

At the bottom of the interface, there is a footer: © CAST Engineering Ltd. - ...you have no ideal!

## 12. PLACE OF INTEREST (POI)

If you need to note an important place on the map, you can use the "POI". Set location on the map where to install the marker, and select a picture for this place. If this is the place you are visiting, you can upload a picture of this place.

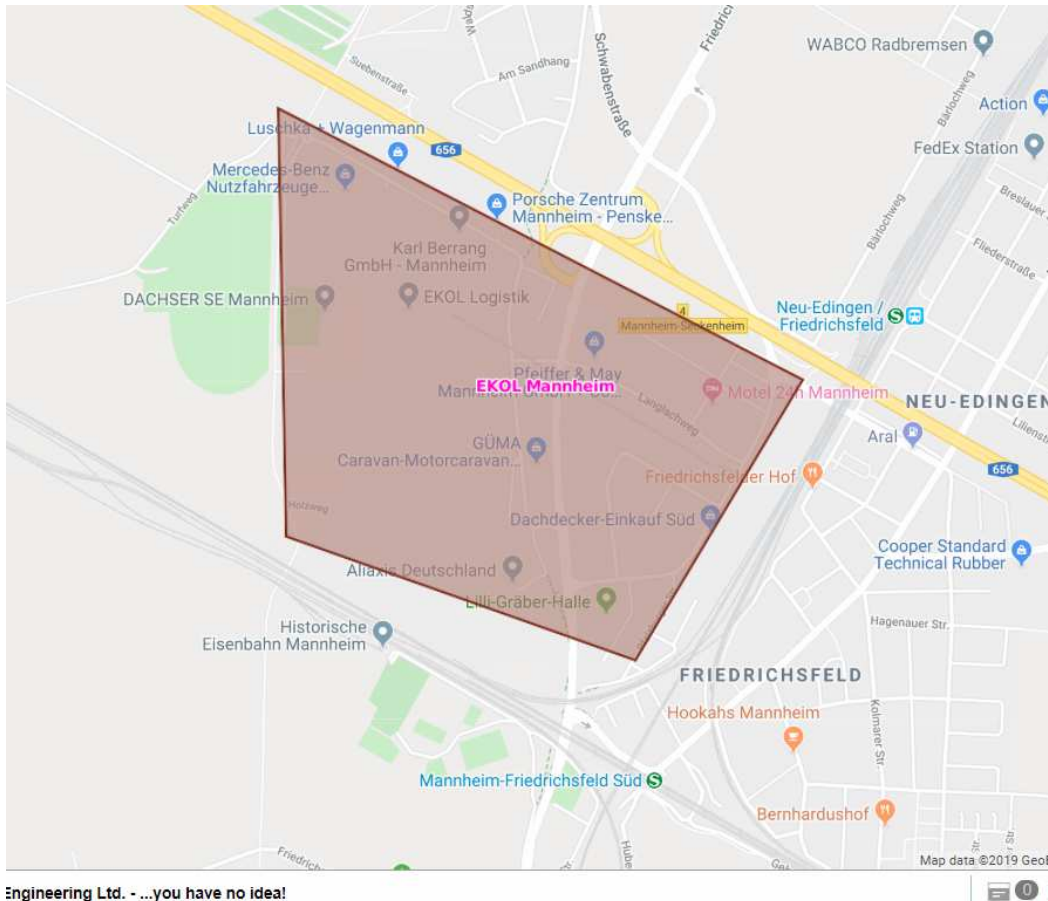
The screenshot shows a list of POI markers. At the top, there are buttons for 'New' and 'All', and a search bar. The list contains the following items:

- AS24 Saint Quentinn Falavier (0)
- AS24 Veurne (0)
- Border Force Check Point (0)
- Carrefour (0)
- Davies Turner (0)
- Eiffel Tower (0)
- EKOL Kolin (0)
- EKOL Mannheim (0)
- GERMANY (17)
- LIDL (0)
- Pisa (0)
- ROSELARE (2)

### 13. GEOZONES

Geozone - a region on the map of interest to the user.

On the site you can control the input and output out/in/from geozone and receive notification by email, SMS message, pop-up window on the screen, also register the event in a database for later analysis. You can find out the units in a specific geozones, or vice versa - in which geozones is the unit.



### 14. NOTIFICATIONS

If you need to be aware of all cases on a unit, use the notification for the control of entrance/exit in/from geozones, speed controls, pressing buttons alarming, activation/deactivation of digital input, control parameter in the message and meaning of the sensor. Set the parameters and specify the most convenient way to receive notification.

CAST Engineering Ltd. Monitoring Tracks Messages Reports Geofences Routes Drivers Passengers Jobs Notifications

New	All	Search	Power	Play	Refresh	Print	Share	Delete
			✓	3	0	1		✗
			✓	3	10	1		✗
			✓	2	4	3		✗
			✓	3	10	3		✗

## 15. REPORTS

There is realized a lot of reports in the system: by trips and parking, routes, SMS communications, a variety of sensors, fuel, speed, quality communications, events, visit geozones. You can also get speed sensor charts with the ability to scale.

Quantity of reports all time is growing.

In reports by **trips and parking's** user can see the beginning and end of trip/parking, location, duration of these intervals, the average and maximum speed if this trip.

Trips									
No	Beginning	End	Driver	Duration	Total time	Mileage	Urban mileage	Suburban mileage	
1	16.12.2019 09:01:59	16.12.2019 09:49:59	Христо Петров Живков	0:48:00	0:48:00	45.00 km	11.00 km	34.00 km	
2	16.12.2019 11:30:54	16.12.2019 13:22:43	Христо Петров Живков	1:51:49	1:51:49	156.00 km	7.00 km	149.00 km	
3	16.12.2019 14:58:45	16.12.2019 17:44:33	Христо Петров Живков	2:45:48	2:45:48	228.00 km	16.00 km	212.00 km	
4	16.12.2019 17:51:03	16.12.2019 17:59:06	Христо Петров Живков	0:08:03	0:08:03	9.00 km	2.00 km	7.00 km	

Speedings									
No	Grouping	Beginning	Location	Duration	Total time	Max speed	Speed limit	Mileage	
1	16.12.2019	09:03:09	ИТАЛИЯ: Boulevard de Garavan, Menton, FR	0:26:36	6:15:07	89 km/h	50 km/h	38.00 km	
1.1	16.12.2019 09:03:09	09:03:09	ИТАЛИЯ: Boulevard de Garavan, Menton, FR	0:00:51	0:00:51	87 km/h	50 km/h	1.00 km	
1.2	16.12.2019 09:04:13	09:04:13	ИТАЛИЯ: Boulevard de Garavan, Menton, FR	0:00:12	0:00:12	86 km/h	40 km/h	0.00 km	
1.3	16.12.2019 09:04:37	09:04:37	ИТАЛИЯ: Boulevard de Garavan, Menton, FR	0:00:13	0:00:13	86 km/h	50 km/h	1.00 km	
1.4	16.12.2019 09:05:16	09:05:16	ИТАЛИЯ: Boulevard de Garavan, Menton, FR	0:00:26	0:00:26	87 km/h	50 km/h	1.00 km	
1.5	16.12.2019 09:06:31	09:06:31	ИТАЛИЯ: Boulevard de Garavan, Menton, FR	0:01:31	0:01:31	87 km/h	50 km/h	2.00 km	
1.6	16.12.2019 09:09:07	09:09:07	ИТАЛИЯ: Boulevard de Garavan, Menton, FR	0:01:57	0:01:57	88 km/h	50 km/h	3.00 km	
1.7	16.12.2019 09:13:18	09:13:18	ИТАЛИЯ: Boulevard de Garavan, Menton, FR	0:02:11	0:02:11	87 km/h	50 km/h	3.00 km	
1.8	16.12.2019 09:17:26	09:17:26	ИТАЛИЯ: Boulevard de Garavan, Menton, FR	0:00:26	0:00:26	86 km/h	50 km/h	1.00 km	
1.9	16.12.2019 09:20:02	09:20:02	ИТАЛИЯ: Boulevard de Garavan, Menton, FR	0:00:52	0:00:52	86 km/h	50 km/h	1.00 km	
1.10	16.12.2019 09:21:47	09:21:47	ИТАЛИЯ: Boulevard de Garavan, Menton, FR	0:00:13	0:00:13	86 km/h	70 km/h	0.00 km	
----	Total	09:03:09	ИТАЛИЯ: Boulevard de Garavan, Menton, FR	0:26:36	6:15:07	89 km/h	50 km/h	38.00 km	

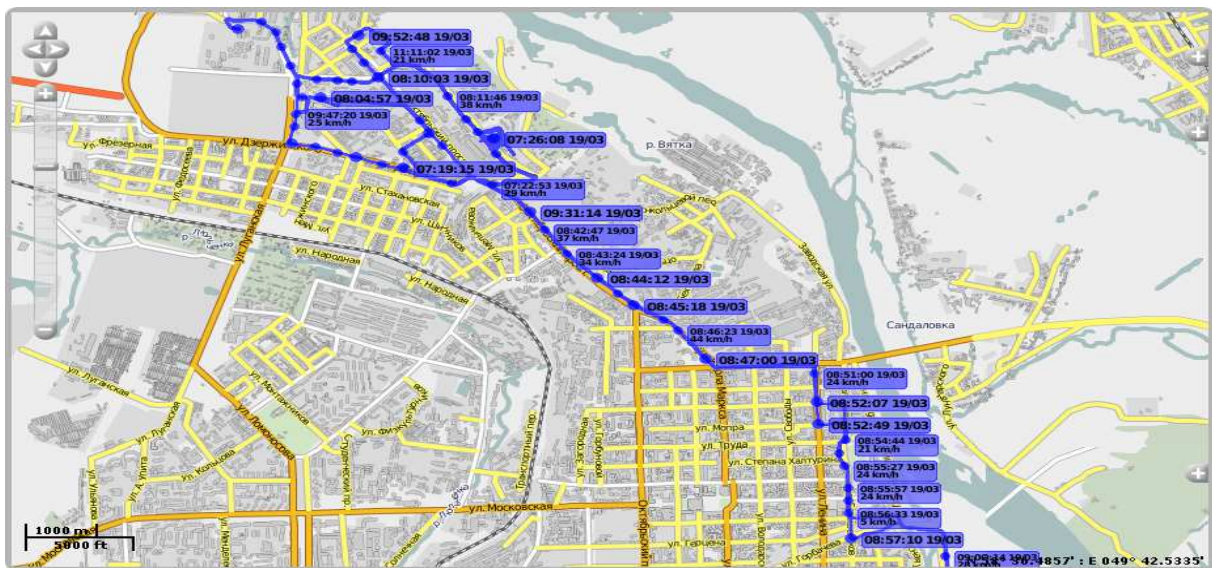
Also you can get **stops report**, which will display all unit's stops for a specified time. This type of report will show what traffic lights or crossroads standing object, or where was a traffic jam.

Stops						
Beginning	End	Duration	Location	Coordinates		
16.12.2019 09:36:36	16.12.2019 09:36:36	0:00:00	ИТАЛИЯ: Boulevard de Garavan, Menton, FR	45.383470, 9.270005		
16.12.2019 09:42:55	16.12.2019 09:42:55	0:00:00	ИТАЛИЯ: Boulevard de Garavan, Menton, FR	45.397225, 9.262025		
16.12.2019 09:43:34	16.12.2019 09:43:36	0:00:02	ИТАЛИЯ: Boulevard de Garavan, Menton, FR	45.397437, 9.262500		
16.12.2019 09:46:45	16.12.2019 09:46:45	0:00:00	ИТАЛИЯ: Boulevard de Garavan, Menton, FR	45.404725, 9.262062		
16.12.2019 11:32:22	16.12.2019 11:32:33	0:00:11	ИТАЛИЯ: Boulevard de Garavan, Menton, FR	45.398055, 9.263303		
16.12.2019 13:19:11	16.12.2019 13:19:11	0:00:00	ИТАЛИЯ: Boulevard de Garavan, Menton, FR	45.414273, 10.852652		
16.12.2019 15:02:11	16.12.2019 15:04:06	0:01:55	ИТАЛИЯ: Boulevard de Garavan, Menton, FR	45.414678, 10.852258		
16.12.2019 17:56:09	16.12.2019 17:56:09	0:00:00	ИТАЛИЯ: Boulevard de Garavan, Menton, FR	45.861068, 12.775072		

**Speed chart** shows speed/time dependence



**Trips routes** presented as track with key points of messages on the map.



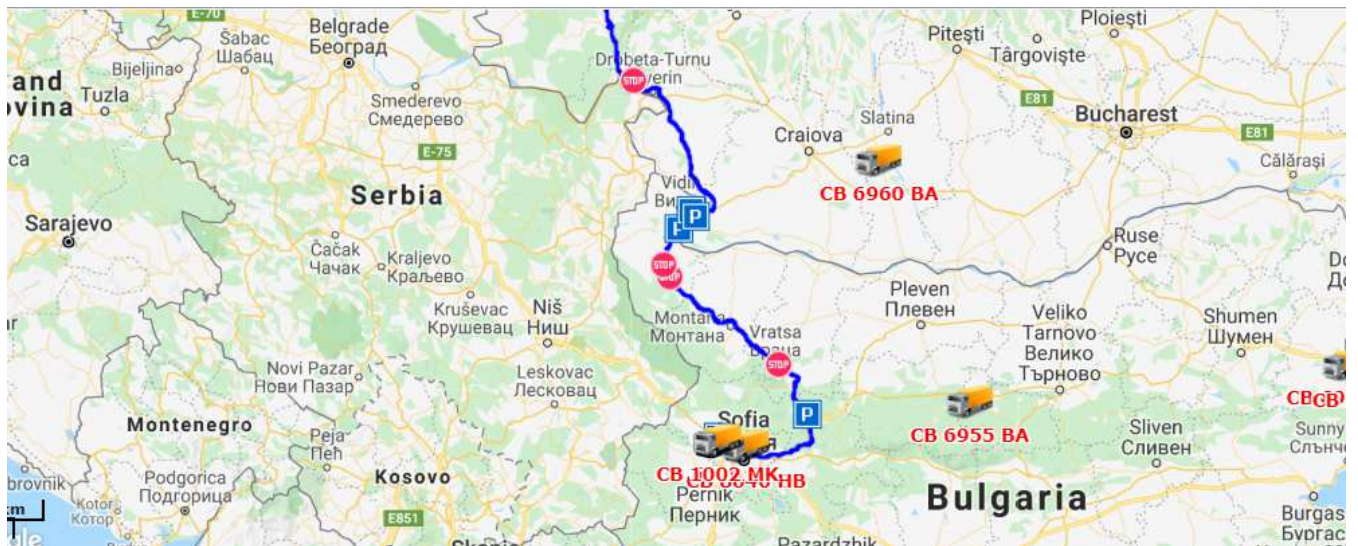
**Device events history** - report which shows all the events registered in the system from the devices. You can get information about the time of the events, the time of its receipt, and the content of the notification.

No	Time	Time of receiving	Event text	Location
1	2019-12-17 20:35:41	2019-12-18 01:31:13	ODUMASE LIB - 602596. 2019-12-17 20:40:41 fuel filling of 12.50 lt detected near 'Mampong - Kumasi, Ashanti, Ghana, 2.50 km from Agona'. Final level 25.00 lt.	Mampong - Kumasi, Ashanti, Gh
2	2019-12-18 09:01:02	2019-12-18 16:31:54	ODUMASE LIB - 602596. 2019-12-18 09:03:10 fuel theft of 12.50 lt detected near 'Mampong - Kumasi, Ashanti, Ghana, 2.50 km from Agona'.	Mampong - Kumasi, Ashanti, Gh
3	2019-12-18 19:16:02	2019-12-18 22:01:06	ODUMASE LIB - 602596. 2019-12-18 19:30:56 fuel filling of 12.50 lt detected near 'Mampong - Kumasi, Ashanti, Ghana, 2.50 km from Agona'. Final level 25.00 lt.	Mampong - Kumasi, Ashanti, Gh
4	2019-12-18 19:35:56	2019-12-18 22:21:06	ODUMASE LIB - 602596. 2019-12-18 19:45:56 fuel filling of 40.56 lt detected near 'Mampong - Kumasi, Ashanti, Ghana, 2.50 km from Agona'. Final level 65.56 lt.	Mampong - Kumasi, Ashanti, Gh
5	2019-12-19 00:20:56	2019-12-19 00:20:57	ODUMASE LIB - 602596. CRITICAL FUEL LEVELFUEL LEVEL with value of 60.00 l. 2019-12-19 00:20:59	Mampong - Kumasi, Ashanti, Gh
6	2019-12-19 23:55:14	2019-12-19 23:55:51	ODUMASE LIB - 602596. CRITICAL FUEL LEVELFUEL LEVEL with value of 50.00 l. 2019-12-19 23:55:53	Mampong - Kumasi, Ashanti, Gh
7	2019-12-20 00:40:14	2019-12-20 03:45:41	ODUMASE LIB - 602596. 2019-12-20 00:55:14 fuel theft of 12.50 lt detected near 'Mampong - Kumasi, Ashanti, Ghana, 2.50 km from Agona'.	Mampong - Kumasi, Ashanti, Gh
8	2019-12-20 01:50:31	2019-12-20 01:50:33	ODUMASE LIB - 602596. CRITICAL FUEL LEVELFUEL LEVEL with value of 50.00 l. 2019-12-20 01:50:34	Mampong - Kumasi, Ashanti, Gh
9	2019-12-20 02:50:31	2019-12-20 02:50:33	ODUMASE LIB - 602596. CRITICAL FUEL LEVELFUEL LEVEL with value of 50.00 l. 2019-12-20 02:50:34	Mampong - Kumasi, Ashanti, Gh
10	2019-12-20 03:00:31	2019-12-20 03:00:33	ODUMASE LIB - 602596. CRITICAL FUEL LEVELFUEL LEVEL with value of 50.00 l. 2019-12-20 03:00:34	Mampong - Kumasi, Ashanti, Gh

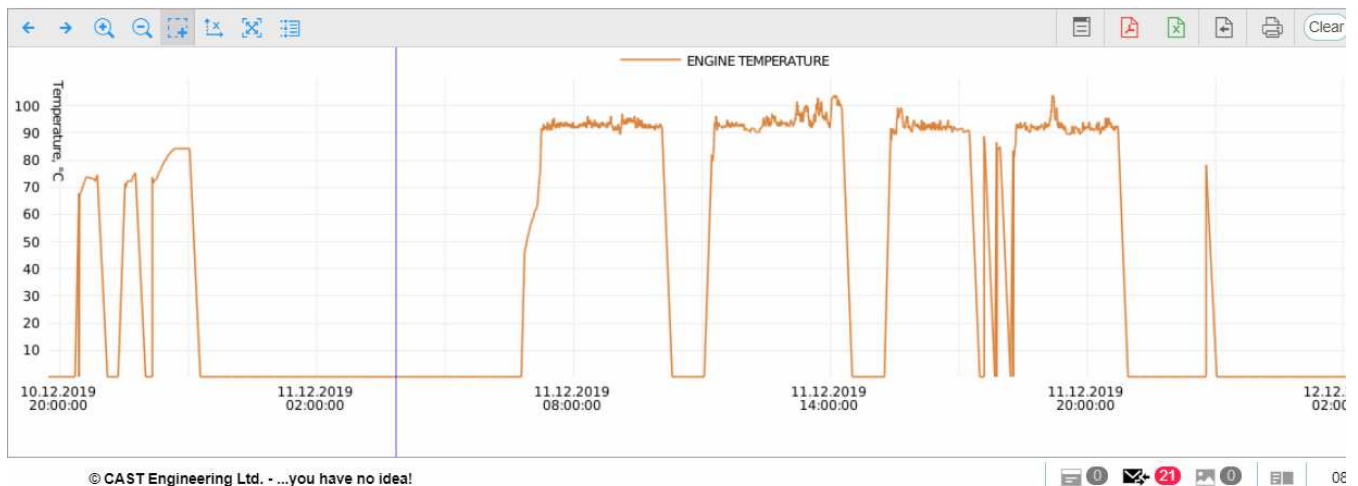
----- 2019-12-17 20:35:41 2019-12-18 01:31:13 ----- Mampong - Kumasi, Ashanti, G

© CAST Engineering Ltd. - ...you have no idea! 06:28:28 (+00)

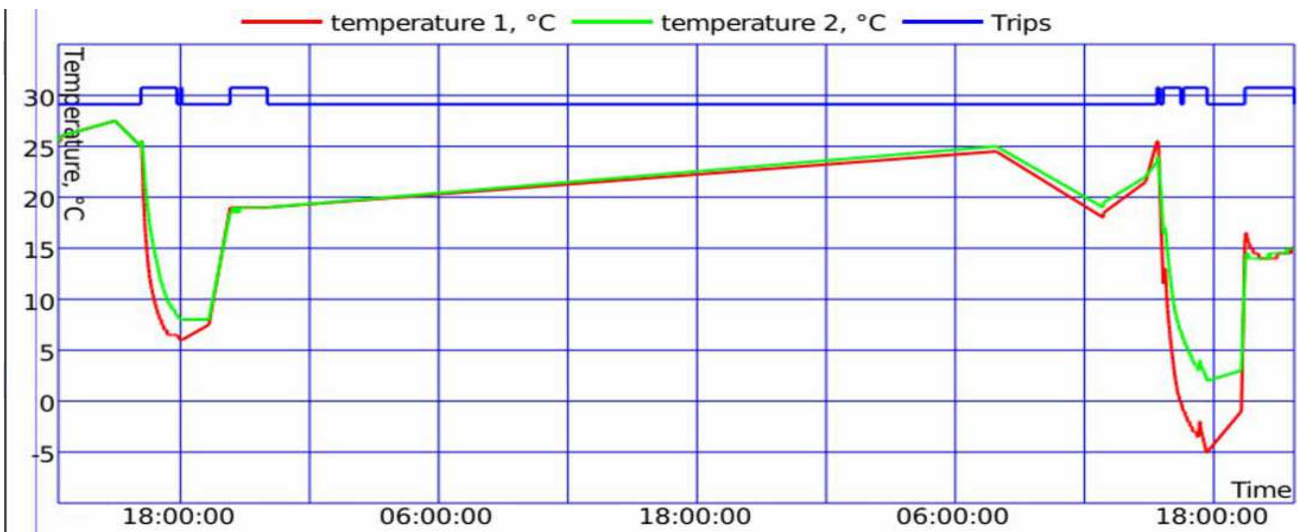
**Stays markers** on map are show by symbols "P", with the start time of the parking.



**Temperature sensors** chart shows the dependence of temperature from time.



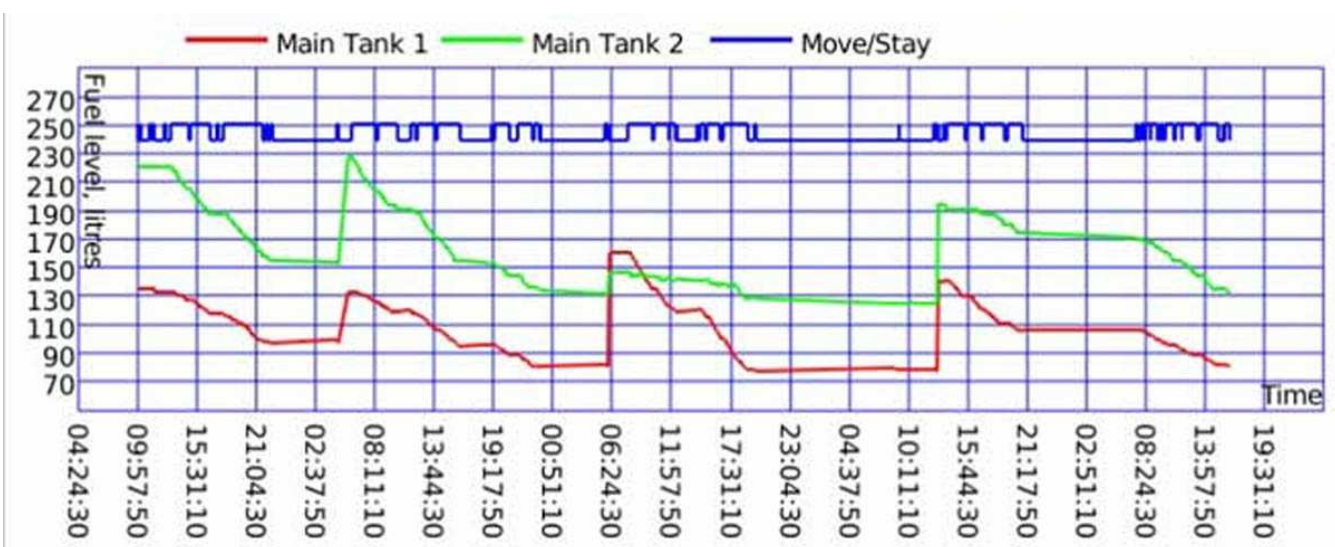
**Refrigerator temperature sensors** chart shows the temperature in each refrigerator compartments (multi temperature sensors support)



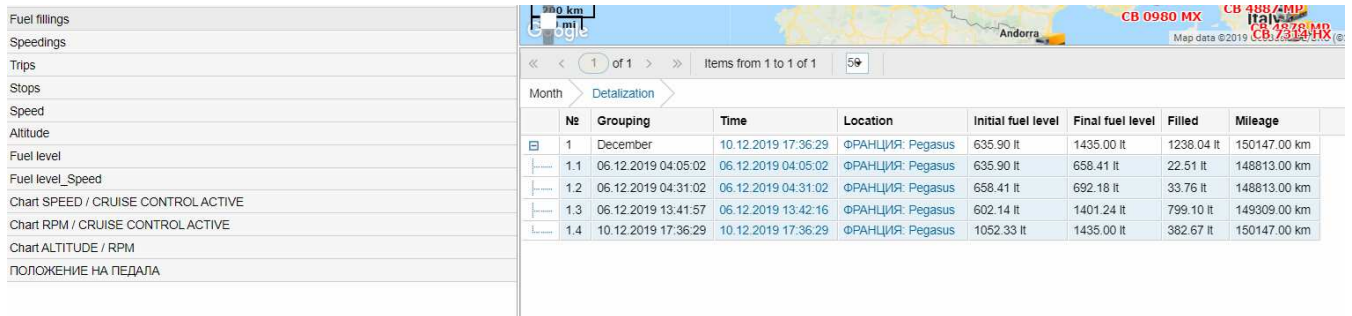
**Fuel level sensors** chart shows the dependence of the availability of fuel in the regular fuel tanks



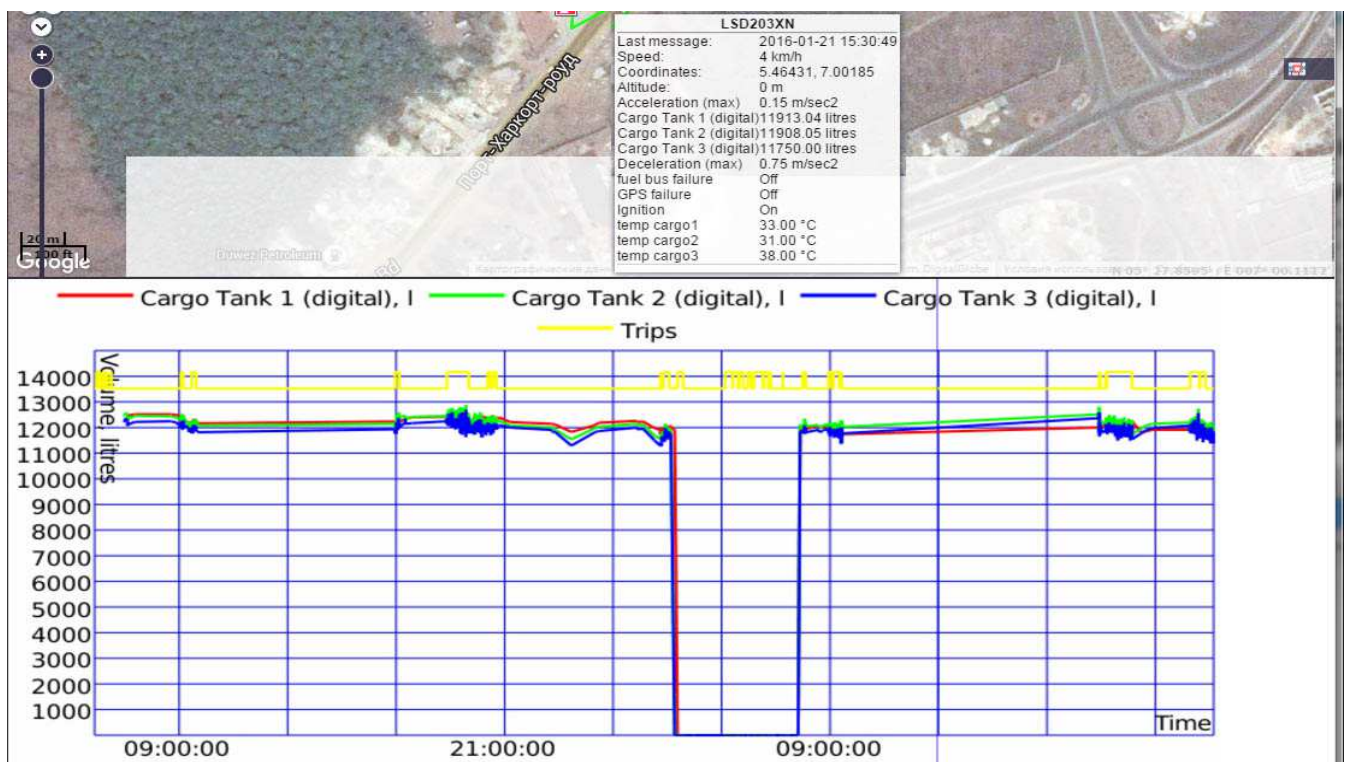
**Multi fuel tanks** graph show fuel volume in each regular fuel tank



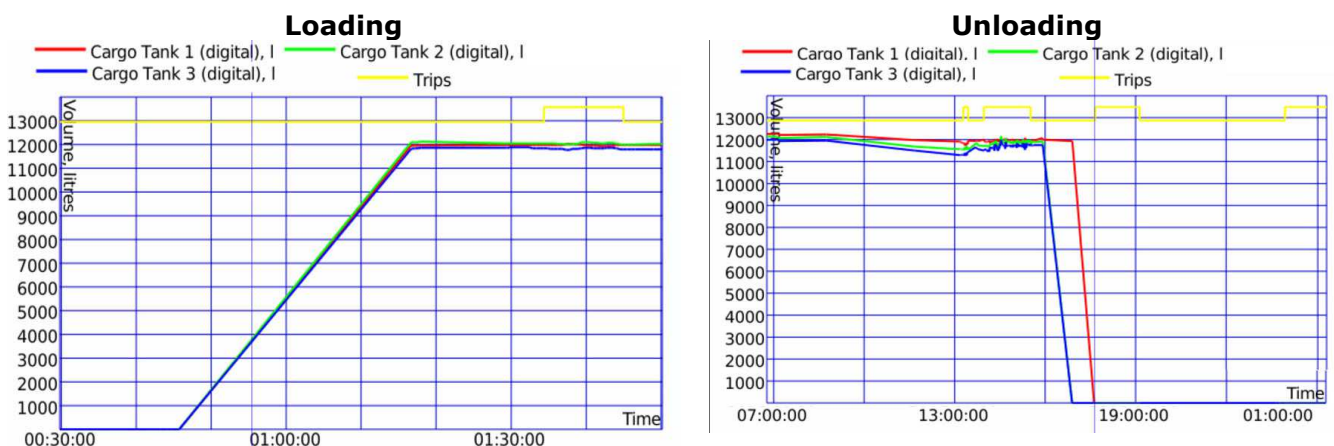
In the **Fuel fillings report** you can see, where the unit was refuel. In order to determine the filling should be configured the unit settings to specify the minimum amount of fuel. The map will show the green mark by fuel.



**Cargo fuel tanks graph** show fuel volume in each cargo fuel tank (up to 11 cargo compartments)



**Loading and unloading fuel in to cargo tanks, graphs**



In the **Fuel thefts report** you can see where the fuel was pour off. In the settings of your unit, you can choose one of six methods of fuel consumption, which may exclude the theft or vice versa to find it.

Beginning	Initial location	Time	Final location	Initial fuel level	Stolen	Final fuel level
03.12.2019 18:58:29	РУМЪНИЯ: Dj293A, Vișoara, RO	03.12.2019 18:58:29	РУМЪНИЯ: Dj293A, Vișoara, RO	1243.67 lt	16.88 lt	1226.78 lt
07.12.2019 20:35:16	Паркинг: A4/A5 Diramazione Ivrea-Santheià, Turin, IT	07.12.2019 20:35:16	Паркинг: A4/A5 Diramazione Ivrea-Santheià, Turin, IT	1035.45 lt	22.51 lt	1012.94 lt
08.12.2019 18:18:03	Паркинг: A4/A5 Diramazione Ivrea-Santheià, Turin, IT	08.12.2019 18:18:03	Паркинг: A4/A5 Diramazione Ivrea-Santheià, Turin, IT	1435.00 lt	461.45 lt	973.55 lt
11.12.2019 14:15:36	Brennero 39041, Autostrada del Brennero	11.12.2019 14:16:11	Brennero 39041, Autostrada del Brennero	635.90 lt	45.02 lt	590.88 lt
13.12.2019 08:38:33	GERMANY	13.12.2019 08:41:48	GERMANY	1333.71 lt	67.53 lt	1266.18 lt
15.12.2019 12:58:31	Паркинг: Autohof Pfaffenhofen	15.12.2019 12:58:31	Паркинг: Autohof Pfaffenhofen	906.02 lt	28.14 lt	877.88 lt
18.12.2019 15:59:55	ИТАЛИЯ: Boulevard de Garavan, Menton, FR	18.12.2019 15:59:55	ИТАЛИЯ: Boulevard de Garavan, Menton, FR	1035.45 lt	11.25 lt	1024.20 lt

All **visited geozones report** is designed to monitor visits the unit of all geozones of current user. Here will show the geozones itself, the time of entry and exit from it, time stay in it and time of lack.

№	Geofence	Time in	Time out	Duration in	Parkings duration	Mileage
1	База Юроспийд	02.12.2019 00:13:44	02.12.2019 16:00:59	15:47:15	15:46:43	1.00 km
2	БЪЛГАРИЯ	02.12.2019 00:13:44	02.12.2019 19:58:08	19:44:24	15:54:05	255.00 km
3	РУМЪНИЯ	03.12.2019 11:57:29	03.12.2019 12:02:24	0:04:55	0:00:00	5.00 km
4	РУМЪНИЯ	03.12.2019 12:22:25	03.12.2019 12:59:40	0:37:15	0:00:00	44.00 km
5	РУМЪНИЯ	03.12.2019 13:38:29	03.12.2019 13:39:35	0:01:06	0:00:00	1.00 km
6	РУМЪНИЯ	03.12.2019 13:42:19	03.12.2019 19:44:48	6:02:29	2:14:33	290.00 km
7	УНГАРИЯ	03.12.2019 19:53:43	04.12.2019 00:45:18	4:51:35	0:18:07	380.00 km
8	АВСТРИЯ	04.12.2019 10:14:20	04.12.2019 14:14:28	4:00:08	0:09:39	327.00 km
9	GERMANY	04.12.2019 14:19:56	05.12.2019 12:42:59	22:23:03	13:58:53	660.00 km
10	Паркинг	04.12.2019 14:25:14	04.12.2019 14:25:33	0:00:19	0:00:00	1.00 km
11	Паркинг	04.12.2019 15:14:53	04.12.2019 15:15:31	0:00:38	0:00:38	0.00 km
12	Паркинг	04.12.2019 16:52:46	04.12.2019 16:53:00	0:00:14	0:00:00	0.00 km
13	Паркинг	04.12.2019 19:28:53	04.12.2019 19:29:09	0:00:16	0:00:00	0.00 km
14	Паркинг	04.12.2019 19:48:20	04.12.2019 19:48:35	0:00:15	0:00:00	0.00 km
15	Паркинг	04.12.2019 22:59:57	05.12.2019 10:40:00	11:40:03	11:40:03	0.00 km
-----	-----	02.12.2019 00:13:44	20.12.2019 08:19:25	26 days 8:56:25	22 days 0:36:10	7656.00 km

© CAST Engineering Ltd. - ...you have no idea!

In the **speeding's report** can be see speeding's of the selected unit, time, location, length, maximum speed, mileage and average speed.

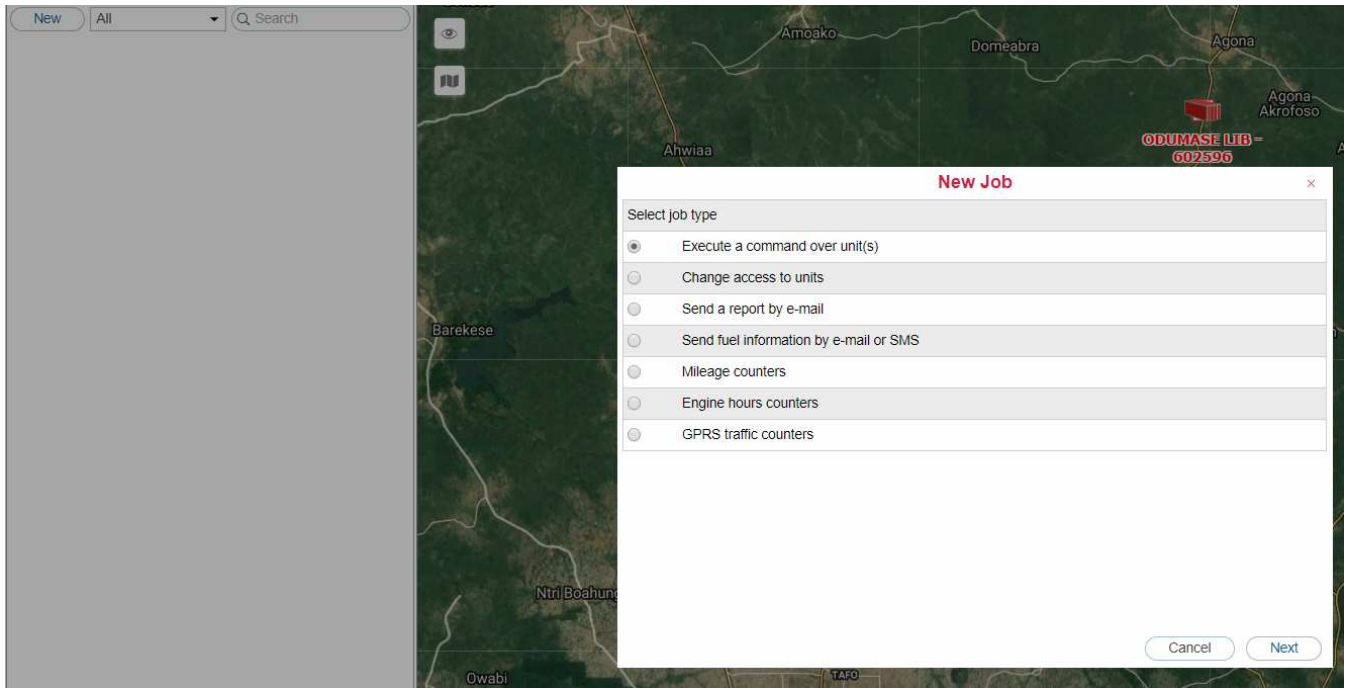
№	Grouping	Beginning	Location	Duration	Total time	Max speed	Speed limit	Mileage
1	02.12.2019	16:09:16	БЪЛГАРИЯ: R 278, Radujevac, RS	0:02:18	3:55:24	92 km/h	60 km/h	3.00 km
2	03.12.2019	11:56:56	DN56, Golentj	0:19:43	4:03:45	87 km/h	50 km/h	25.00 km
3	05.12.2019	13:18:55	ЛЮКСЕМБУРГ: CR 337, Hautbellain, LU	0:00:15	0:00:15	79 km/h	50 km/h	1.00 km
4	06.12.2019	15:20:14	ФРАНЦИЯ: Pegasus	0:00:16	0:00:16	71 km/h	50 km/h	0.00 km
5	07.12.2019	15:16:24	Archamps 74160, L'Autoroute Blanche	0:00:13	0:00:13	87 km/h	50 km/h	1.00 km
6	09.12.2019	07:54:39	ИТАЛИЯ: Boulevard de Garavan, Menton, FR	0:01:12	6:43:09	78 km/h	60 km/h	2.00 km
7	10.12.2019	12:45:07	ИТАЛИЯ: Boulevard de Garavan, Menton, FR	0:02:17	0:02:17	71 km/h	50 km/h	3.00 km
8	11.12.2019	07:34:22	ИТАЛИЯ: Boulevard de Garavan, Menton, FR	0:14:51	0:53:31	88 km/h	50 km/h	23.00 km
9	16.12.2019	11:47:53	Brennero 39041, Autostrada del Brennero	0:00:15	0:00:15	77 km/h	60 km/h	0.00 km
10	17.12.2019	11:53:17	ИТАЛИЯ: Boulevard de Garavan, Menton, FR	0:05:40	8:04:22	89 km/h	70 km/h	8.00 km
11	18.12.2019	15:34:27	ИТАЛИЯ: Boulevard de Garavan, Menton, FR	0:00:18	0:00:18	64 km/h	40 km/h	0.00 km
-----	Total	16:09:16	БЪЛГАРИЯ: R 278, Radujevac, RS	0:48:25	1 days 3:25:57	92 km/h	60 km/h	66.00 km

© CAST Engineering Ltd. - ...you have no idea!



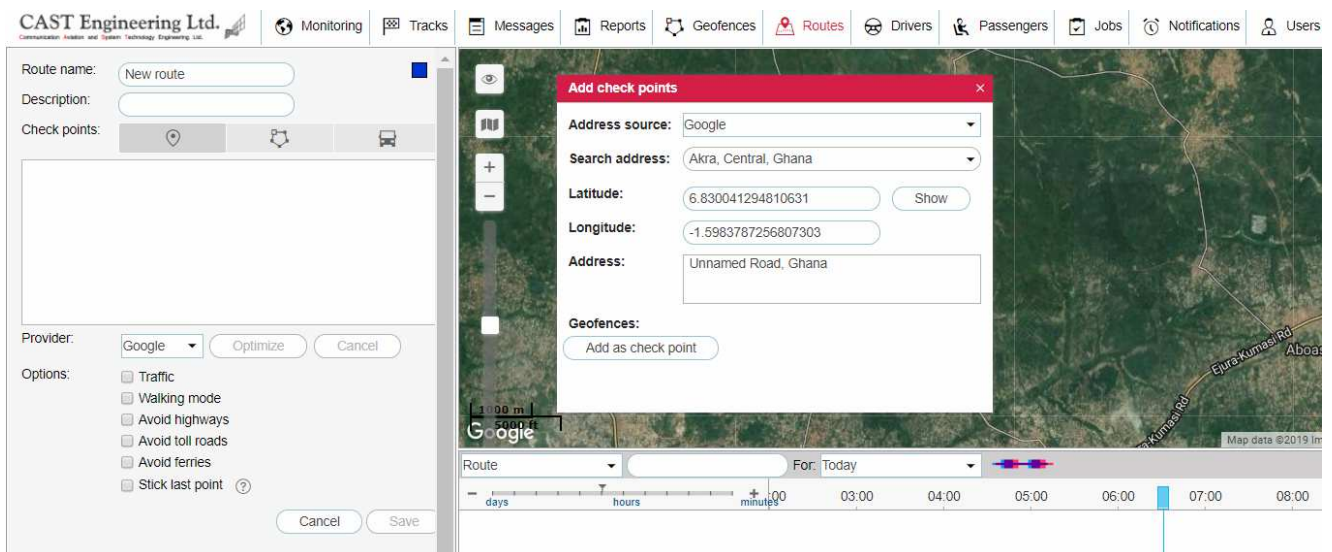
## 16. JOBS

The user can create two types of tasks: to send the report by email, and execute command over devices. Set the time of the execution job on schedule or with any frequency, set the time of activation and the number of jobs (or leave the infinite).



## 17. ROUTES

The operator can set the object on the route. If the object will fall short, be ahead or come down with the route you'll know about it.



## 18.USERS

Create any number of users, to monitor your unit(s).

**New User**

General Access Advanced Logs Custom Fields

Name: \*

Password: \*

Confirm password: \*

Host mask: ?

Creator:

Account:

Measurement system:

Can create items:

Can change password:

Can send SMS:

Enabled:

Can change settings:

Define the customized settings for each user and set access to units

**New User**

General Access Advanced Logs Custom Fields

All Presets of access rights for units

Q Search A-Z

No access	<input checked="" type="checkbox"/> Full access	Read only
-----------	---	-----------

Edit Presets

Item ACL	Unit ACL
<input checked="" type="checkbox"/> <input type="checkbox"/> View item and its basic properties	<input checked="" type="checkbox"/> <input type="checkbox"/> View connectivity settings (device type,...
<input checked="" type="checkbox"/> <input type="checkbox"/> View detailed item properties	<input checked="" type="checkbox"/> <input type="checkbox"/> Edit connectivity settings
<input checked="" type="checkbox"/> <input type="checkbox"/> Manage access to this item	<input checked="" type="checkbox"/> <input type="checkbox"/> Create, edit, and delete sensors
<input checked="" type="checkbox"/> <input type="checkbox"/> Delete item	<input checked="" type="checkbox"/> <input type="checkbox"/> Edit counters
<input checked="" type="checkbox"/> <input type="checkbox"/> Rename item	<input checked="" type="checkbox"/> <input type="checkbox"/> Delete messages
<input checked="" type="checkbox"/> <input type="checkbox"/> View custom fields	<input checked="" type="checkbox"/> <input type="checkbox"/> Execute commands
<input checked="" type="checkbox"/> <input type="checkbox"/> Manage custom fields	<input checked="" type="checkbox"/> <input type="checkbox"/> Manage events
<input checked="" type="checkbox"/> <input type="checkbox"/> View admin fields	<input checked="" type="checkbox"/> <input type="checkbox"/> View service intervals
<input checked="" type="checkbox"/> <input type="checkbox"/> Manage admin fields	<input checked="" type="checkbox"/> <input type="checkbox"/> Create, edit, and delete service intervals
<input checked="" type="checkbox"/> <input type="checkbox"/> Edit not mentioned properties	<input checked="" type="checkbox"/> <input type="checkbox"/> Import messages
<input checked="" type="checkbox"/> <input type="checkbox"/> Change icon	<input checked="" type="checkbox"/> <input type="checkbox"/> Export messages

Cancel OK

## 19. UNITS GROUPS

The user can combine the units into groups for ease of monitoring. Membership of the group will display a small icon next to the object.

New Unit Group ✕

General
Access
Icon
Custom Fields

Name: \*

Creator:

Account:

Name ▼

ADAKO JACHIE - 600814

ATWIMA MANHYIA - 600657

ODUMASE LIB - 602596

Select All

»

«

Name ▼

Select All

Cancel
OK