

Fuel Tank Monitoring



GuardMagic JBB-01

fuel monitoring system

GuardMagic JBB-01: is a two channel safety barrier and it is designed to power and signal transmitting (EIA-485) to fuel level sensor GuardMagic DLLE series (or the same sensors) located in hazardous area (Zone 0).

About:

GuardMagic JBB-01 is a safety barrier for connection fuel level sensors located in hazardous area (Zone 0).

GuardMagic JBB-01 can support up to two fuel level sensors GuardMagic DLLE series (or the same).

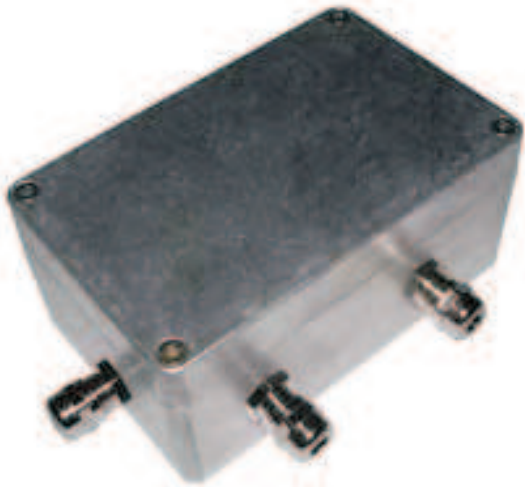
GuardMagic JBB-01 has an IP 65 anti vandal die cast aluminum housing.

GuardMagic JBB-01 is designed with the EX equipments requirements (ATEX rules).

GuardMagic JBB-01 has to be located outside hazardous area.

Advantages:

- Standard and heavy application
- TWO outputs to hazardous area
- Multi tanks support
- Barrier serial connection
- Anti vandal protection
- Die cast aluminum housing
- Outdoor application
- Junction box functionality
- Compact dimension



GuardMagic JBB-01

Specification:

General:

Input Voltage	11 ... 36V
Signal communication Interface	EIA-485
Nominal output current	0,07A
Outputs to hazardous area	2 outputs

Output intrinsically parameters:

Open-circuit voltage, U0	10V
Short-circuit current, I0	0,6A
Max. external capacitance, C0	15,0 uF
Max. external inductance, L0	1,0mH

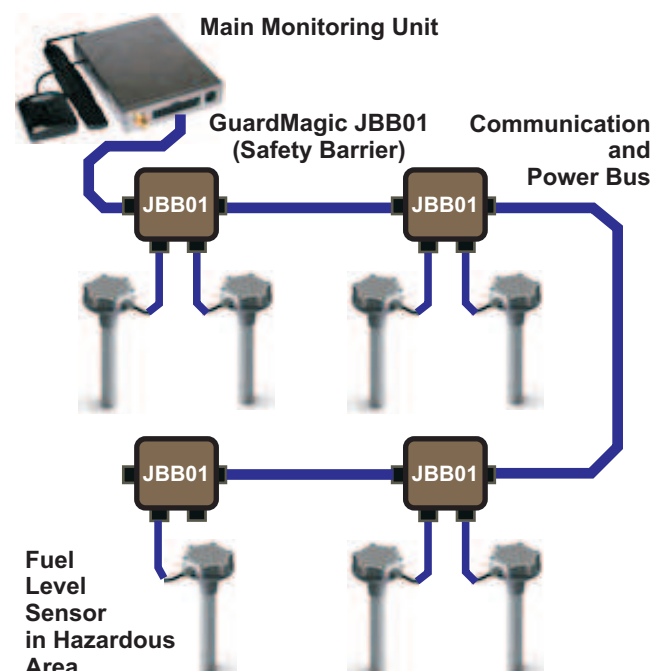
Operation:

Operation area	non-hazardous
Operation pressure	atmospheric
Operation temperature	-40 ... +80
Ingress protection	IP65
Impact protection	IK10
Dimension (without gland), mm	125x80x58

Application:

- Road Fuel Tanker
- Fuel Distribution Truck
- Fuel Storage
- Fueling Station

Sample of Connection Structure:



Gives Moze, Than You Think